



Cutting & Wear

The Hardfacing Specialist

Fishing & Milling Inserts

A comprehensive selection
of fishing and milling inserts

www.cwuk.com



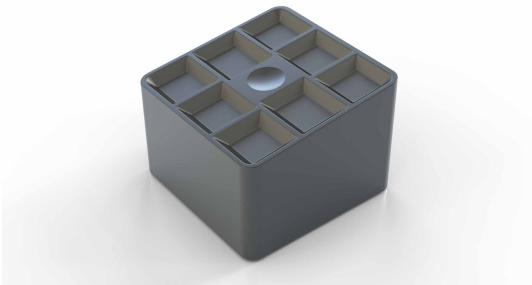
Cutting & Wear's range of milling inserts will provide everything that you need to maximise your drilling processes and performance.

We offer a unique selection of tungsten carbide inserts designed to breakthrough a wide variety of formations and obstacles. The majority of our fishing and milling inserts have been optimised for use with Cutting & Wear's patented QuickTip process allowing ease of application where possible.

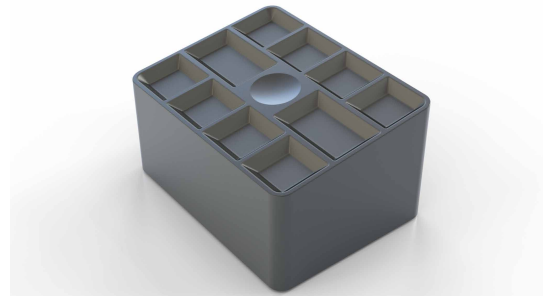
Part numbers and dimensions for each insert are included on the following pages. Dimensions are specified in Length x Width x Thickness (Height) unless specified otherwise. Most of our inserts are also available copper coated or nickel coated, for specific information and up to date pricing and availability please contact our sales team.

If you don't see what you need, please contact us to discuss your custom requirements as inserts can be manufactured in a variety of grades to suit your specific application.

Fishing & Milling Inserts



$3/8" \times 3/8" \times 1/4"$
straight sided insert with top rake and chip breaker
Part Ref: INHF20001



$1/2" \times 3/8" \times 1/4"$
straight sided insert with top rake and chip breaker
Part Ref: INHF20002



$3/8" \times 3/8" \times 1/4"$
dimpled straight sided insert with chip breaker
Part Ref: INHF00016



$1/2" \times 3/8" \times 1/4"$
dimpled straight sided insert with chip breaker
Part Ref: INHF00015

Fishing & Milling Inserts

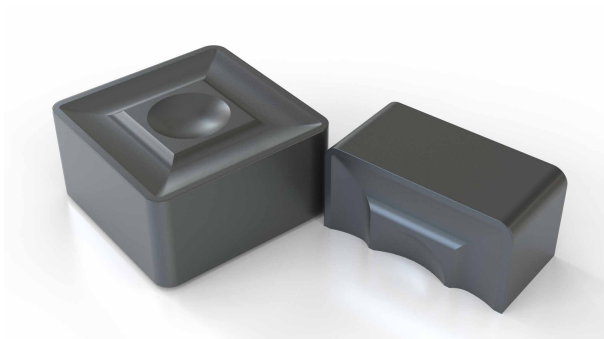


$3/8" \times 3/8" \times 1/4"$
straight sided insert with chip breaker

Part Ref: INHF00028

$3/8" \times 3/16" \times 1/4"$
straight sided insert with chip breaker

Part Ref: INHF00028H



$3/8" \times 3/8" \times 3/16"$
straight sided insert with chip breaker

Part Ref: INHF00028-1

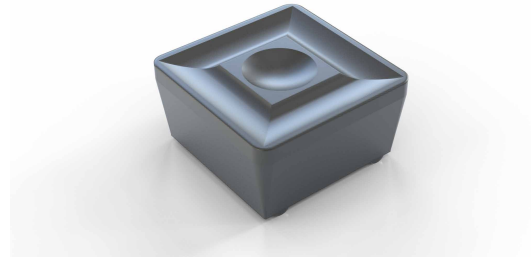
$3/8" \times 3/16" \times 3/16"$
straight sided insert with chip breaker

Part Ref: INHF00028-1H

Fishing & Milling Inserts



$3/8" \times 3/8" \times 1/4"$
tapered insert with chip breaker
Part Ref: INHF00104



$3/8" \times 3/8" \times 3/16"$
tapered insert with chip breaker
Part Ref: INHF00105



$3/8" \times 3/8" \times 1/4"$
tapered insert with top rake and chip breaker
Part Ref: INHF00161

Can't find what you need?

Please contact us to discuss your specific requirements, many of our inserts can be manufactured in a range of grades to meet your needs.

Fishing & Milling Inserts

Many of our inserts are available in half insert format, and all inserts are available with either nickel or copper coating.



1/2" x 1/4" x 1/4"
tapered side oval insert with chip breaker
Part Ref: INHF00057OV

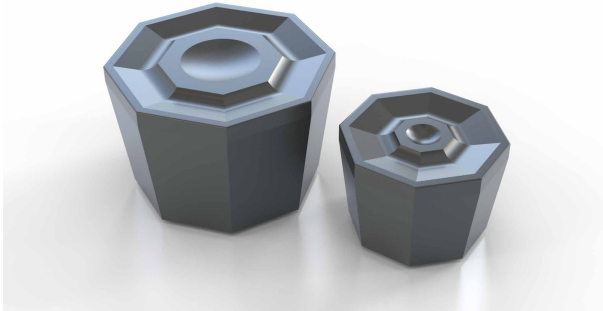


5/8" x 3/8" x 1/4"
tapered side oval insert with chip breaker
Part Ref: INHF00065OV



3/4" x 1/2" x 1/4"
tapered side oval insert with chip breaker
Part Ref: INHF00066OV

Fishing & Milling Inserts



9.5mm x 9.5mm x 1/4"
tapered octagonal insert with chip breaker

Part Ref: INHF00082OC

6.75mm x 6.75mm x 1/4"
tapered octagonal insert with chip breaker

Part Ref: INHF00081OC



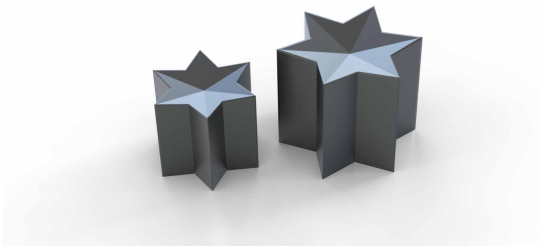
3/8" diameter x 1/4"
tapered round insert with chip breaker

Part Ref: INHF00030BX

1/4" diameter x 3/16"
tapered round insert with chip breaker

Part Ref: INHF00030BX14

Fishing & Milling Inserts



5mm diameter across the points
straight sided insert, in 6 pointed star

Part Ref: INHF00125-5

6.5mm diameter across the points
straight sided insert, in 6 pointed star

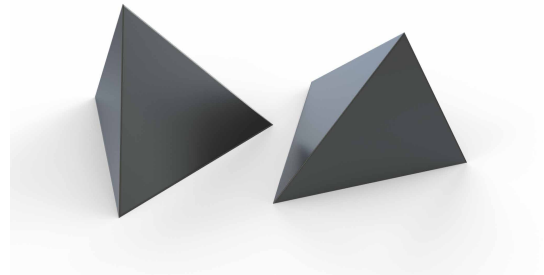
Part Ref: INHF00125-6.5



All of our fishing & milling inserts are manufactured to our CW6 grade, providing a heavy duty metal cutting grade of tungsten carbide.

It's extreme toughness is well suited to downhole applications, providing excellent performance when cutting steel as well as being capable of cutting trickier grades of metal containing Chrome and Nickel.

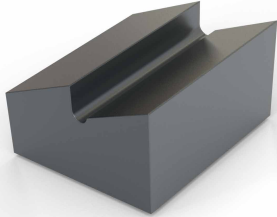
Both StarCutt and Sharkstooth inserts can be supplied in composite rod form to allow for easy application.



5/16" base to point
prism shaped insert

Part Ref: IN11Sharkstooth

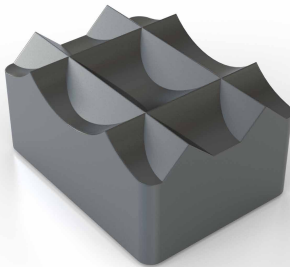
Fishing & Milling Inserts



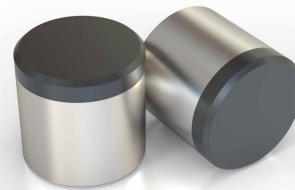
3/8" x 3/8" x 1/4"
square insert with 2 step top profile
Part Ref: INHF00029



3/8" straight sided triangular insert
with chip breaker
Part Ref: INHF00059TRI



1/2" x 3/8" x 1/4"
straight sided rectangular insert,
with 'gatorback' top profile
Part Ref: INHF00055



PDC Inserts
Available in a range of sizes based on your
requirements. Pictured insert is 13.44mm
Diameter x 13.2mm long with 2mm PDC

Related Items

Cutting & Wear also supply a wide range of hardfacing consumables and workshop equipment.

Whatever your needs, get in touch with our sales team to see how we can help.



Nickel Bronze Brazing Rod

We can supply a range of sizes of nickel bronze brazing rods in both standard and flux coated options. It's a high strength 10% nickel alloy, with a UTS of 80,000 PSI (avg) with a potential to work harden up to 100,000 PSI, making it well suited to this application.



SUPACUTT
COMPOSITE ROD

SUPACUTT
Xtreme
PREMIUM COMPOSITE ROD

SupaCutt and SupaCutt Xtreme Composite Rod

We offer a number of composite rod options and our dedicated team can help you decide which solution will work best for the job at hand.



Brazing Flux

We can supply in both 12 mesh and 30 mesh. Also available is Pink Flux, a water soluble powder which is mixed to a paste, used when applying flux to tools at room temperature before heating.

Technical Benefits & Application

Product Development

The CW6 grade was developed as a tough cutting carbide formula that outperformed other insert grades during extensive field trials with a leading fishing and milling service provider. Over an extended period of use this grade has proved to be the most effective at providing the necessary characteristics of toughness and hardness that are required for effective downhole metal removal.

Since development of this grade various designs of insert have evolved within the Cutting & Wear portfolio to provide a range of options to address different aspects of milling tool design whether it's for section mills, coil tubing mills, whipstock mills and many others.

QuickTip Hardfacing System

For over 25 years the QuickTip hardfacing process from Cutting & Wear has been established as the leading method for applying hardfacing to the wear critical areas of stabilisers and for improving the cutting capabilities of milling tools.

QuickTip provides fast, clean, and precise hardfacing that other methods are unable to match.

The QuickTip method provides a bond that can be ultrasonically checked for integrity, guaranteeing the highest quality hardfacing possible.

Milling Applications

- ✓ Application at room temperature allows precise positioning – beneficial when building the leading edges and walls on mill blades
- ✓ Brazed using nickel bronze due to its high strength, fluidity and economy of use
- ✓ Inserts are tacked down, preventing movement during brazing





Cutting & Wear

The Hardfacing Specialist

www.cwuk.com



+44 (0)114 257 8085 | sales@cwuk.com | Cowley Way, Smithy Wood, Ecclesfield, Sheffield, S35 1QP